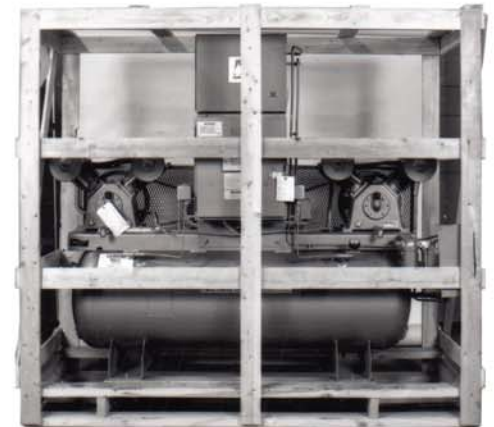


### PROVIDES CLEAN, DRY, INSTRUMENT CONTROL AIR

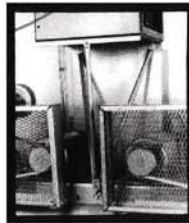
## Twelve Good Reasons...

### For Choosing A FSCURTIS Climate Control Air Compressor

- 1 FSCURTIS Climate Control Compressors provide clean, dry air for instrument control equipment Available in Simplex and Duplex models ranging from 1/3 to 25 HP all units are factory set at 80 PSIG to deliver the cfm you require for you application.
- 2 All Climate Control Compressor units with mounted dryers are shipped in wooden crates with heavy-duty skids providing maximum protection from damage.
- 3 Duplex dryer mounted units built for strength, accessibility and ease of handling
- 4 All performance data is ASME tunnel tested in accordance with industry standard practice.
- 5 Oil carryover guaranteed within 6 PPM
- 6 Full freight discounts automatically passed on.
- 7 Duplex control panels available with 150 VA, 120V transformer. Meets National Electric Code and U.L. approved per code established October 1988.
- 8 Electrical motor guaranteed within  $\pm 5\%$  of full load stamped nameplate amperage draw.
- 9 Centrally located shipping point minimizing freight costs.
- 10 Excellent deliveries to meet required arrival dates.
- 11 Nationwide factory authorized service depot network.
- 12 Nationwide sales offices located in major cities to assist you in sizing, starts per hour, special configurations, submittal data, etc.



*Illustration of rigid steel plate mounting of dryer with braces for added strength*



*Illustration of PRV station rigidly mounted for easy accessibility.*



*Duplex Dryer mounted unit with dryer depicting equal weight distribution for ease of handling*



**Genuine. FSCURTIS.**

CURTIS-TOLEDO®, INC.  
 1905 Kienlen Avenue  
 St. Louis, Missouri 63133  
 314.383.1300 or 800.925.5431  
 www.curtistoledo.com  
 info@curtistoledo.com

Form No. \_\_\_\_\_